



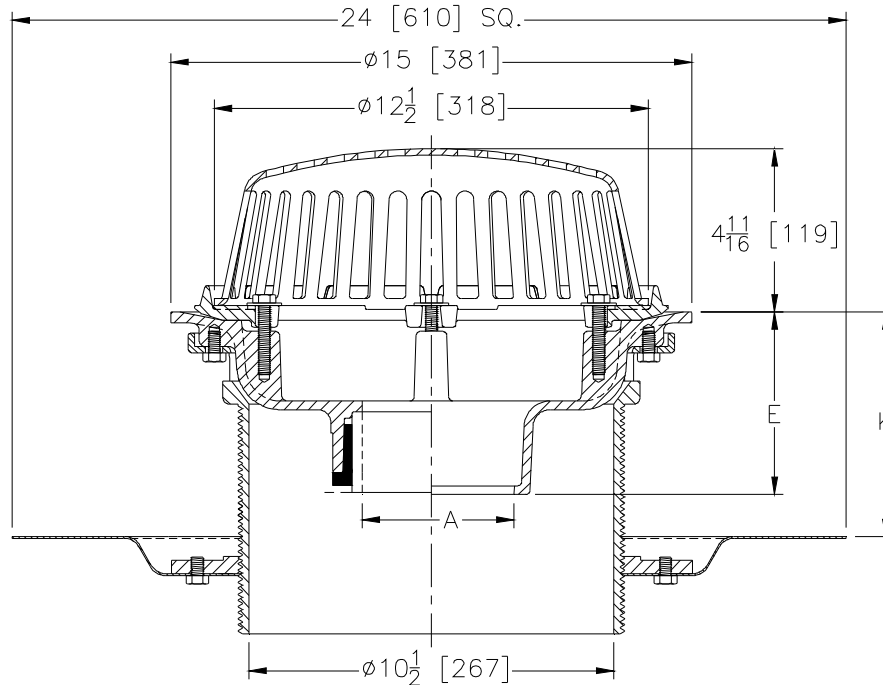
Z100-DR

15 [381] DIAMETER MAIN ROOF DRAIN W/ TOP-SET® DRAIN RISER AND LOW SILHOUETTE DOME

SPECIFICATION SHEET

TAG _____

Dimensional Data (inches and [mm]) are Subject to Manufacturing Tolerances and Change Without Notice



A Pipe Size In.	K		Approx. Wt. Lbs. [kg]	Dome Open Area Sq. In. [cm ²]
	Min.	Max.		
2-3-4 [51-76-102]			63 [29]	103 [665]
5-6 [125-152]	2 5/8 [67]	7 1/4 [184]	64 [29]	
8 [203]			65 [29]	

ENGINEERING SPECIFICATION: ZURN Z100-DR
15 [381] Diameter roof drain. Dura-Coated cast iron body with combination membrane flashing clamp/gravel guard, top-set® drain riser, drain riser flange, top-set® deck plate, and low silhouette Poly-Dome.

OPTIONS (Check/specify appropriate options)

PIPE SIZE

- 2 thru 6,8 [51 thru 152,203]
- 2 thru 6,8 [51 thru 152,203]
- 2 thru 6,8 [51 thru 152,203]
- 2,3,4 [51,76,102]
- 6 [152]

(Specify size/type) **OUTLET**

- _____ IC Inside Caulk
- _____ IP Threaded
- _____ NH No-Hub
- _____ NL Neo-Loc
- _____ NL Neo-Loc

E BODY HT. DIM.

- 5 1/4 [133]
- 3 3/4 [95]
- 5 1/4 [133]
- 4 9/16 [116]
- 5 7/16 [112]

PREFIXES

- _____ Z D.C.C.I. Body with Poly-Dome*
- _____ ZA D.C.C.I. Body with Aluminum Dome
- _____ ZC D.C.C.I. Body with Cast Iron Dome
- _____ ZRB D.C.C.I. Body with Plain Bronze Dome

SUFFIXES

- | | |
|--|---|
| <ul style="list-style-type: none"> _____ -AR Acid Resistant Epoxy Coated _____ -AW 3/4 [19] to 4 [102] Adj. Water Level Regulator _____ -BS Bronze Mesh Screen Over Dome _____ -FG Flush Grate (Replaces Dome Strainer) _____ -G Galvanized Cast Iron _____ -GD Galvanized Cast Iron Dome (ZC Only) _____ -HD 6 3/4 [171] High Aluminum Dome Strainer (148 Sq. In. [955 cm²] Open Area) _____ -SS Stainless Steel Mesh Screen Over Dome _____ -TC Neo-Loc Test Cap Gasket (2 [51] - 4 [102] NL Bottom Outlet Only) | <ul style="list-style-type: none"> _____ -VP Vandal Proof Secured Top _____ -W2 2 [51] Internal Water Dam _____ -W3 3 [76] Internal Water Dam _____ -W4 4 [102] Internal Water Dam _____ -84 Stainless Steel Perforated Gravel Guard _____ -89 2 [51] High External Water Dam |
|--|---|

*REGULARLY FURNISHED UNLESS OTHERWISE SPECIFIED

REV. B	DATE: 7/15/10	C.N. NO. 111383
DWG. NO. 66806		PRODUCT NO. Z100-DR